

WeM Online system

Main – Company, Promotion information

Enter the online system's website in the browser to reach the system



Main menu

HOME SHOPPING REDEEM GIFT LANGUAGE LOGIN



Company logo

HKB2B Limited

Company name

WeM Online System

Short sentence

Date and time

Thursday 1 April 2021 13:04:49

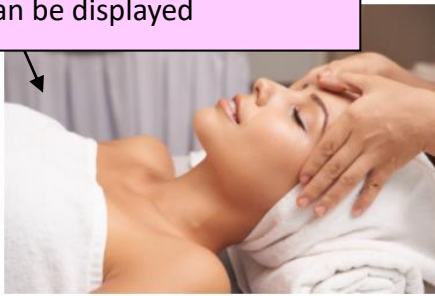
Promotion title

NEW BRANCH WILL OPEN SOON

Short description

To celebrate the opening of the new branch, we will launch different offers to thank customers for their support.

Max six promotion photos can be displayed



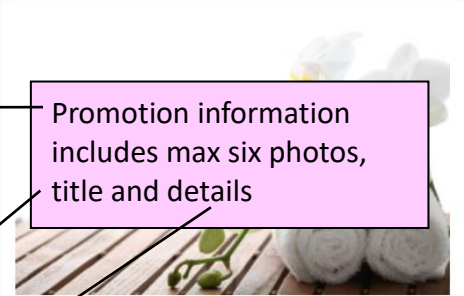
Facial treatment

skincare professional has access to pharmaceutical-grade treatment products that can be used to customize any facial treatment or at-



Body Treatment

In order to maintain and improve the health and appearance of skin, a proper skincare regimen is essential. Although the specific products depend on conditions, every effective three fundamental elements action, and Correction.



Skin analysis

Scientific perspective, reveal the future of skin. Skin analysis can deeply analyze the underlying skin condition. Help you choose the most suitable antioxidant skin care solution to solve the problem of skin aging.

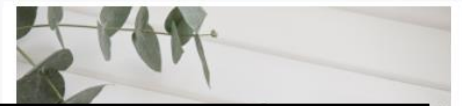
Press the arrow to switch to the next photo
Press the photo to view the information details

health and beauty of skin.



Comprehensive skin care

By combining advanced medical beauty treatments, professional treatments and high-quality home care, a long-lasting and comprehensive repair effect can be achieved. To maintain the effect of the treatment, we also provide professional treatments including chemical peels and anti-aging treatments.



COMPREHENSIVE SKIN CARE



By combining advanced medical beauty treatments, professional treatments and high-quality home care, a long-lasting and comprehensive repair effect can be achieved. To maintain the effect of the treatment, we also provide professional treatments including chemical peels and anti-aging treatments.

aging, sun damage and even skin cancer.